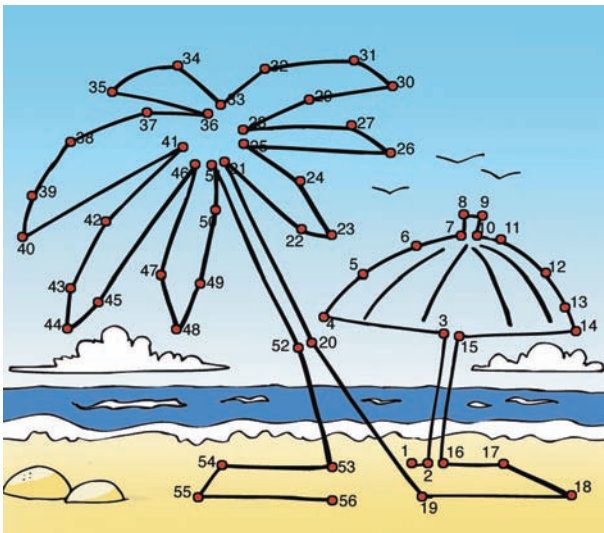


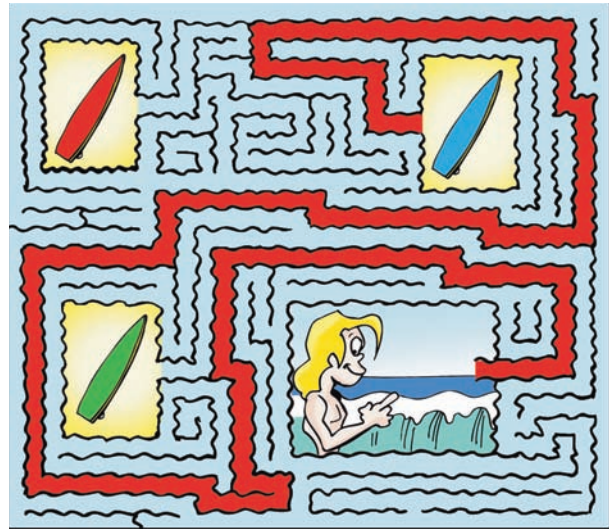
## Page 4

### POINTS À RELIER



## Page 5

### LABYRINTHE



## Page 6

### KAKURO

1	2		2	1
3	4	2	1	5
		3	4	6
2	5	1	4	3
4	1		3	1

## Page 7

### CHIFFRES CROISÉS

Horizontalement

$9 + 2 + 6 = 17$

$1 + 5 + 3 = 9$

$8 + 4 + 7 = 19$

Verticalement

$9 + 1 + 8 = 18$

$2 + 5 + 4 = 11$

$6 + 3 + 7 = 16$

## Page 8

### CONNEXIONS

- 1/ FIACRE - CRÊPER - PERSAN - SANTON - TONDRE - DRELIN.
- 2/ COMMIS - MISSEL - SELLES - LESTER - TERGAL - GALANT.
- 3/ TOISER - SERMON - MONTRE - TRÉMAS - MASTOC - TOCADE.

## Page 9

### SUDOKU FACILE

6	5	8	7	4	2	9	3	1
9	3	7	1	8	6	2	4	5
2	4	1	9	3	5	7	6	8
8	7	2	4	5	9	3	1	6
5	9	3	2	6	1	8	7	4
4	1	6	8	7	3	5	2	9
7	8	5	3	1	4	6	9	2
3	2	4	6	9	8	1	5	7
1	6	9	5	2	7	4	8	3

## Page 10

### LABY-CHIFFRES



## Page 11

### MÉLI-MÉLO

- BRUN - BLEU  
- ROSE - JAUNE -  
CYAN - VERT.



# Solutions

## Page 12

MOTS FLÉCHÉS

	B		E		E	
S	U	L	T	A	N	S
	R	I	A	N	T	E
O	E		L	I	E	R
	A	C		S	N	E
N	U	P	I	E	D	S

## Page 13

MOTS FLÉCHÉS

	F		F		R	
D	E	S	E	R	T	S
	R	A	R	E	T	E
T	R	U	I	E		R
	E	T	A	L	A	I
P	R	E	S	U	M	E

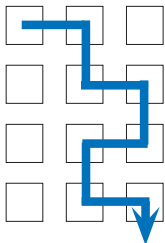
## Page 14

MOTS CROISÉS

S	C	A	N	N	E	R
H	A	L	E	I	N	E
O	M	I	S		O	C
O	B		L	A	L	O
T	R	I	E	L		L
A	E	F		B	I	T
S	E	S	S	I	L	E

## Page 15

TOUT COMPTE FAIT



## Page 16

MOTS CROISÉS

P	H	R	A	S	E	S
L	A		L	I		P
A	I	S	E		H	I
S	E	I	S	M	E	
M		N	E	A	N	T
A	L	U		I	N	O
S	U	E	R	A	I	T

## Page 17

MOTS CROISÉS

T	O	S	C	A	N	S
H	I	E	S		A	A
L	E	M		S	O	L
A		A	B	U	S	A
S	C	I	E	R		N
P	I	N		S	E	T
I	L	E	T		H	S

## Page 18

MOTS FLÉCHÉS

	P		C		H	
C	I	N	E	M	A	S
	S	E	R	I	N	A
G	A	R	A	N	T	I
	N	E	T		E	N
C	O	S	S	U	E	S